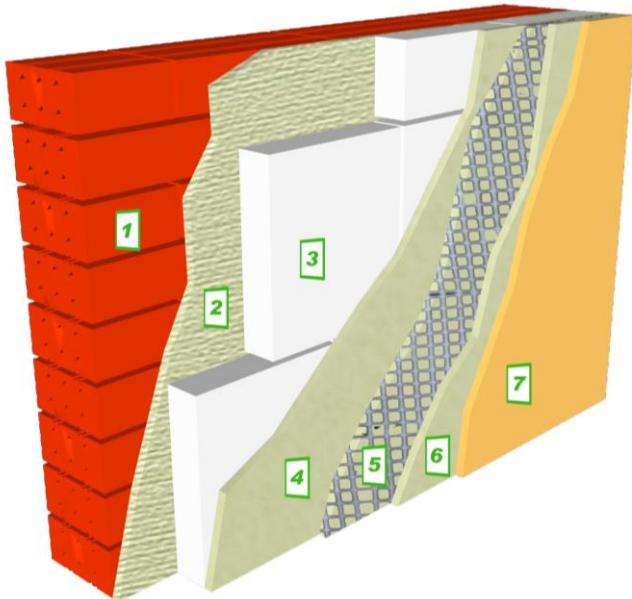




CONCRESEAL® PLASTERING -XPS

FLEXIBLE MORTAR FOR FINISHING AND PROTECTION OF POLYSTYRENE INSULATION PANELS IN SWIMMING POOLS



- 1 Substrate of Brick or Concrete Block.
- 2 Thin coat of CONCRESEAL PLASTERING -XPS (6X6 mm toothed trowel).
- 3 Insulation Panel.
- 4 Waterproofing coating: MAXSEAL FLEX (2 coats) reinforced with DRIZORO MESH 58.
- 5 1^o Layer of CONCRESEAL PLASTERING -XPS reinforced with DRIZORO MESH 140.
- 6 2^a Layer of CONCRESEAL PLASTERING -XPS.
- 7 Coloured decorative finish with MAXSHEEN POOL.

Solution of CONCRESEAL® PLASTERING -XPS on insulation panels in swimming pools.

DESCRIPTION

CONCRESEAL® PLASTERING -XPS is a cement-based mortar, with flexible properties, suitable for levelling, protection and finishing of swimming pools executed with polyurethane or polystyrene insulation panels.

- Permeable to water vapour, suitable against negative hydrostatic pressure conditions.
- Allow smooth finishing applied by trowel.
- Only needs water for mixing.
- Non-flammable, odour-free, suitable for poor ventilated areas.

APPLICATION FIELDS

- Coating for levelling, protection and finishing of insulation panels in swimming pools, spas, thermal baths or other situations subjected to permanent immersion.
- Fixing of polystyrene foam panel on masonry units or concrete.

ADVANTAGES

- Water and weather resistant, very long durability compared to other paints because of its cement base.
- Excellent adhesion on insulation materials or waterproofing coatings of gamma **MAXSEAL® FLEX**. No primer/bonding agent is required.

APPLICATION INSTRUCTIONS

Surface preparation and fixing of insulation panels

Fix mechanically the panels to the substrate using **CONCRESEAL® PLASTERING -XPS** as adhesive. For it, dampen thoroughly the surface to be covered with the panels avoiding the formation of puddles, and then apply by trowel a uniform and thin coat of **CONCRESEAL® PLASTERING -XPS** over the substrate. Then, style using a 6x6 mm toothed trowel horizontally to regularize the thickness and avoid the risk of slipping. Not apply thickness higher than 6 mm. Allow at least 24 hours with auxiliary anchoring means while its curing.

After that, in permanent immersion conditions, waterproof previously the panels surface with two

coats of **MAXSEAL® FLEX** reinforced with **DRIZORO® MESH 58**. Allow 7 days curing time before covering with **CONCRESEAL® PLASTERING -XPS**.

Mixing

A 25 kg bag of **CONCRESEAL® PLASTERING -XPS** requires from 4,0 to 4,5 litres (17±1 %, by weight) of clean water, according to environmental conditions and desired finish. Pour the required amount of mixing water in a clean container followed by **CONCRESEAL® PLASTERING -XPS** and mix by slow speed electric drill (400-600 rpm) fitted with a disc mixer for about 1-2 minutes until achieving a lump-free and homogenous mortar. Allow the mixture to rest for 5 minutes, and remix briefly for a few seconds before applying.

For spray method application, do not change the ratio mortar:water while the mixing process.

Application

Apply by trowel an even and thick layer of **CONCRESEAL® PLASTERING -XPS** with a consumption from 3 to 4 kg/m², for an approximate thickness of 2 mm. Over this coat, in fresh, place a fibre glass mesh **DRIZORO® MESH 140** (140 g/m², 0,5 cm mesh), embedding it in the mortar. Once the first layer has set for about 8 to 24 hours, depending on application conditions, apply a second layer also about 2 mm thick, make sure that mesh is completely embedded. Application can also be made by wet-mix spray method. Final texture is obtained with a trowel before the product hardens.

Finish

For providing a decorative colour finish apply one coat of the water-based acrylic coating suitable for structures subject to permanent contact with water as swimming pools **MAXSHEEN® POOL**.

Allow at least 5 to 7 days, depending on ambient conditions, for the mortar to dry completely before applying this decorative finish.

Application conditions

Do not when rain is expected within 24 h after the application.

The optimum temperature range for application is from 10°C to 30°C. Do not apply with substrate and/or ambient temperature is at or below 5°C, or when temperatures are expected to fall below 5°C within 24 h. Do not apply on frozen or frost-covered surfaces.

For applications at hot temperatures (> 30°C), low relative humidity and/or windy conditions, i.e. summer time, surface must be wet thoroughly with plenty of water prior to application. Avoid direct exposure to sunlight with extreme heat.

Curing

Allow a curing time for at least 7 days (20°C and 50% R.H.) before permanent immersion.

Prevent quick drying of **CONCRESEAL® PLASTERING -XPS** and protect it from extreme heat and direct sunlight exposure to maintain its moisture for at least 2 hours after application, spraying a fine mist of water, without causing a wash out of surface.

Cleaning

All tools and equipments should be cleaned immediately with water after use. Once it hardens, can only be removed by mechanical means.

CONSUMPTION

Estimated consumption of **CONCRESEAL® PLASTERING -XPS** is from 3,0 to 4,0 kg/m² per layer for a thickness of 1,5 mm to 2,0 mm. Total consumption in two layers: 6,0-8,0 kg/m².

This figure may vary depending on porosity, texture and conditions for substrate, and application method. Perform a preliminary test on-site to ascertain the total consumption exactly under jobsite conditions.

IMPORTANT INDICATIONS

- Do not add cement, additives, aggregates or other compounds.
- Use the recommended mixing ratio for mixing water.
- Observe the recommended consumption and thickness per layer.
- To restore the workability of the fresh mortar, remix briefly again the mortar but never add more water. Do not mix more material than can be applied in 20-30 minutes.
- Do not apply on vitrified substrates or treated with water repellent agents. Do not apply on bituminous materials, gypsum or paints.
- Do not use leftovers from previous mixes.
- For other uses not specified on this Technical Bulletin or further information, consult the Technical Department.

PACKAGING

CONCRESEAL® PLASTERING -XPS is supplied in 25 kg bags. It is available in white colour.

STORAGE

Twelve months in its original unopened packaging. It must be stored in a dry and covered place,

protected from humidity and freezing, with temperatures above 5 °C.

areas with water and soap. In case of eye contact, rinse thoroughly with clean water but do not rub. If irritation persists consult a doctor.

SAFETY AND HEALTH

CONCRESEAL® PLASTERING -XPS is non-toxic but it is an abrasive compound. Protective rubber gloves and safety goggles must be used to mix and apply. In case of skin contact, wash affected

Safety Data Sheet of **CONCRESEAL® PLASTERING -XPS** is available by request.

The final user is responsible for the disposal of the product and its empty packaging, disposal must be made according to official regulations.

TECHNICAL DATA

Product characteristics	
General appearance and colour	White powder
Maximum aggregate size, (mm)	< 0,5
Density for powder, (g/cm ³)	1,30 ± 0,10
Mixing water (% by weight)	17 ± 1
Application and curing conditions	
Minimum application temperature for substrate and ambient, (°C)	> 5
Pot life at 20°C and 50% R.H., (min)	30 - 45
Setting time at 20°C and 50% R.H., (h)	
Initial	3-4
Final	5-6
Minimum/Maximum waiting between coats at 20°C and 50 % R.H., (min)	8-24
Curing time for permanent immersion at 20°C and 50 % R.H., (d)	7
Cured product characteristics	
Density of dry mortar, (g/cm ³)	1,75 ± 0,10
Compression strength at 1/ 7/28 days, EN 1015-11, (N/mm ²)	9 / 24 / 25,5
Thickness / Consumption*	
Minimum - maximum thickness per coat, (mm)	1,5-2,0
Consumption per coat / total consumption, (kg/m ²)	3,0-4,0 / 6,0-8,0

* This figure is for guidance only and may vary depending on porosity, texture, substrate conditions and application method. Perform a preliminary test on job-site to ascertain the total consumption exactly.

GUARANTEE

The information contained in this leaflet is based on our experience and technical knowledge, obtained through laboratory testing and from bibliographic material. **DRIZORO®, S.A.U.** reserves the right to introduce changes without prior notice. Any use of this data beyond the purposes expressly specified in the leaflet will not be the Company's responsibility unless authorised by us. We shall not accept responsibility exceeding the value of the purchased product. The data shown on consumptions, measurement and yields are for guidance only and based on our experience. These data are subject to variation due to the specific atmospheric and jobsite conditions so reasonable variations from the data may be experienced. In order to know the real data, a test on the jobsite must be done, and it will be carried out under the client responsibility. We shall not accept responsibility exceeding the value of the purchased product. For any other doubt, consult our Technical Department. This version of bulletin replaces the previous one.